

Hemp Oil



Why use Hemp Oil from Standard Process?

- Provides 15 mg of phytocannabinoids per serving to support the endocannabinoid system (ECS): the body-wide signaling network that promotes homeostasis*
- Pure, potent, broad-spectrum hemp oil
- Liquid form — convenient, flexible dosing with a graduated dropper
- Non-genetically engineered hemp*

The Endocannabinoid System (ECS): A Crucial System for Whole Body Balance

The ECS is perhaps the most important physiologic system involved in establishing and maintaining human health. Endocannabinoids and their receptors are found throughout the body organs, brain, connective tissues, glands, immune cells, and more. The ECS performs different tasks in each of these tissues, but the goal is always the same: the maintenance of a stable internal environment — homeostasis — despite fluctuations in the external factors. It's a bridge between body and mind that can aid in the response to physical and emotional stress.¹

How does Hemp Oil support the ECS?*

The 15 mg of phytocannabinoids in Hemp Oil from Standard Process help support the ECS, which governs various critical functions of the body. This includes neuronal, digestive, endocrine, immune, bone and muscular systems. It's a full-spectrum hemp oil that contains natural phytocannabinoids which show distinct-but-complementary actions at specific cellular receptors in humans.² Emerging evidence suggests the ECS and phytocannabinoids may play a critical role in the well-balanced systemic function of the body.³⁻⁶

NOTES

DOSAGE AM

PM

ENDOCANNABINOID SYSTEM SUPPORT

FIGURE 1. The Endocannabinoid System (ECS): An Important System for Whole Body Balance



- Central Nervous System
- Immune Response System
- Cardiovascular System
- Digestive System
- Hormones
- Muscles
- Bones
- Metabolism

Hemp Oil from Standard Process is a liquid-based hemp supplement that delivers convenient, flexible dosing with a graduated dropper

Supplement Facts

Serving Size: 1 mL
Servings per Container: 30

	Amount per Serving	%Daily Value
Calories	10	
Total Fat	1 g	1%*
Hemp Oil (stalk and seed) contains 15 mg phytocannabinoids	106 mg	†
Organic extra virgin olive oil	795 mg	†

*Percent Daily Values are based on a 2,000 calorie diet.
†Daily Value not established.

Please consult the actual product label for the most accurate product information.

The ECS is comprised of components that include:

- Endocannabinoids: Lipid-derived signaling molecules produced by the human body that have activity similar to phytocannabinoids.
- Cannabinoid receptors: Both endo- and phytocannabinoids act on cannabinoid receptors (CB1/2) found throughout the body. They activate specific CB-receptors, which lead to a variety of physiologic processes via the cross-talk between cellular networks. This helps to maintain the systemic homeostasis that is governed by the ECS.⁷⁻⁹
- Hydrolytic enzymes: Responsible for breaking down endocannabinoids.¹⁰⁻¹¹

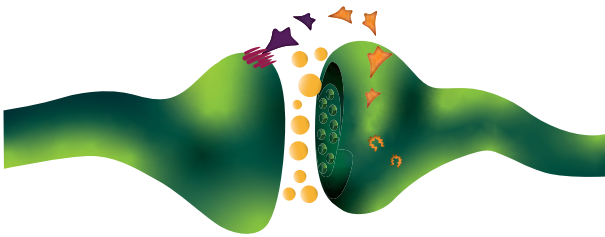


FIGURE 2. The ECS is a major lipid signaling network comprised of endogenous, lipid-based, physiological ligand molecules (endocannabinoids) that plays a pro-homeostatic role in peripheral organs besides the central nervous system (CNS).

What makes Hemp Oil from Standard Process different than other hemp-based supplements?

- Standard Process takes a proven approach to procuring its hemp. The entire process — from seed genotype selection (EU Commission Certified Strains) to the farm on which it is grown — is managed to ensure the highest-quality raw materials.
- Sourced from a family owned & operated farm in Europe with decades of experience
 - Grown on land that is strategically diversified by topography, crop, geographic region, micro climate, soil/terrain, and irrigation systems
 - Super Critical Fluid Extraction process that utilizes CO₂ instead of organic solvents
 - Pure hemp oil: Tested for — and free of — contaminants
 - Potent: Only fats and lipids are extracted from the stalk of the hemp plant
 - Broad spectrum: Contains no CBD isolates, which are considered drugs by the FDA and DEA
 - Each batch is independently tested for purity and quality to ensure it falls below the reference standards of pesticides

REFERENCES

1. Lutz B, Marsicano G, Maldonado R, Hillard CJ. *Nat Rev Neurosci*. 2015;16(12):705–718. doi:10.1038/nrn4036
2. Paula Morales, Dow P. Hurst, and Patricia H. Reggio. *Prog Chem Org Nat Prod*. 2017; 103: 103–131. doi: 10.1007/978-3-319-45541-9_4
3. Ruiz de Azua I, Lutz B. *Cell Mol Life Sci*. 2019;76(7):1341–1363. doi:10.1007/s00018-018-2994-6
4. Sharkey KA, Wiley JW. *Gastroenterology*. 2016;151(2):252–266. doi:10.1053/j.gastro.2016.04.015.
5. Di Marzo V, Piscitelli F. *Neurotherapeutics*. 2015;12(4):692–698. doi:10.1007/s13311-015-0374-6.
6. Kumar A, Premoli M, Aria F, et al. *Planta*. 2019;249(6):1681–1694. doi:10.1007/s00425-019-03138-x
7. Borowska M, Czarnywojtek A, Sawicka-Gutaj N, et al *Endokrynol Pol*. 2018;69(6):705–719. doi:10.5603/EP.a2018.0072
8. Pagotto U, Marsicano G, Cota D, Lutz B, Pasquall R. *Endocr Rev*. 2006;27(1):73–100. doi:10.1210/er.2005-0009
9. Gatta-Cherif, B. & Cota, D. *Int J Obes (Lond)*. 2016 Feb;40(2):210-9. doi: 10.1038/ijo.2015.179.
10. Cravatt B, Giang D, Mayfield S, Boer D, Lerner R, Gilula N. *Nature*. 1996;384:83–87. doi: 10.1038/384083a0.
11. Dinh T, Freund T, Piomelli D. 2002;121:149–158. doi: 10.1016/S0009-3084(02)00150-0.

More than
80%
of the raw plant ingredients used in our products are grown on our organic and sustainable farm

Freshly
picked crops
are often processed within a day to maintain vital nutrients

We harvest more than
6.5M
pounds of ingredients on our certified organic and sustainable farm

Healthy Soil. Healthy Plants. Healthy Lives.

Standard Process is a family-owned company dedicated to making high-quality and nutrient-dense therapeutic supplements for three generations.

We apply a holistic approach to how we farm, manufacture and protect the quality of our products. This comprehensive strategy ensures that our clinical solutions deliver complex nutrients as nature intended. It's how we define the whole food health advantage.